



UNITED STATES DEPARTMENT OF COMMERCE
National Oceanic and Atmospheric Administration
NATIONAL MARINE FISHERIES SERVICE
75 Virginia Beach Drive
Miami, FL 33149

June 25, 1984

TO: F/SEC13x21 - J. Ernest Snell
~~F/SEC13x22 - Kenneth C. Harris~~
F/SEC13x23 - Orman H. Farley
F/SEC13x24 - Thomas R. Dawley

FROM: *Kimrey D. Newlin*
F/SEC13x2 - Kimrey D. Newlin

SUBJECT: Count Size Conversion

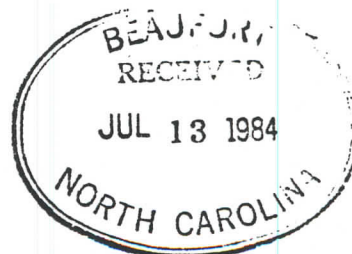
When converting heads-on shrimp landings data to heads-off form for entry on the NOAA Form 88-20, "Shrimp Data Collection Form," the number of pounds, the price per pound, and the count size should all be converted on the basis of the established conversion factor which is specific to the species.

Please be sure that all NMFS Fishery Reporting Specialists under your supervision as well as all state Port Agents within your area are aware of and properly conform to this procedure.

Attachments

CC: Guy Davenport

Finda send to Ted, John, Chan, Nelson and Betty



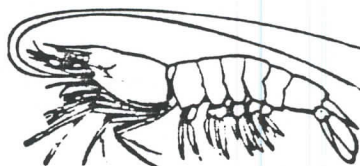
STATISTICAL SURVEY PROCEDURE

RECOVERY OF SHRIMP PRODUCTS AND FACTORS
FOR CONVERTING THEM TO HEADS-ON WEIGHT

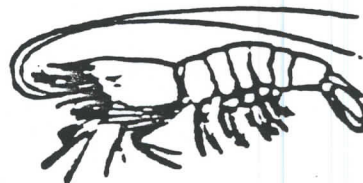
ITEM	SOUTH ATLANTIC AND GULF CATCH		PACIFIC AND NORTH ATLANTIC CATCH	
	PERCENT RECOVERY FROM HEADS-ON WEIGHT	TO CONVERT TO HEADS-ON WEIGHT, MULTIPLY BY:	PERCENT RECOVERY FROM HEADS-ON WEIGHT	TO CONVERT TO HEADS-ON WEIGHT, MULTIPLY BY:
HEADLESS:				
BROWN (PENAEUS AZTECUS)	62.1	1.61	-	-
PINK (PENAEUS DUCIPARUM)	62.5	1.60	-	-
WHITE (PENAEUS SETIFERUS)	64.9	1.54	-	-
ROYAL RED (HYMENOPENAEUS ROBUSTUS)	55.6	1.80	-	-
SEA BOBS (XIPHOPENAEUS KROYERI)	65.4	1.53	-	-
OTHER (MOSTLY PANDALUS SPECIES)	-	-	57.0	1.75
ALL SPECIES (WEIGHTED AVERAGE)	62.9	1.59	57.0	1.75
PEELED FANTAIL, RAW 1/2	50.0	2.00	-	-
PEELED, RAW 1/2	49.0	2.04	28.0	3.57
PEELED, COOKED 1/2	31.9	3.13	-	-
BREADED, RAW (INCLUDING FANTAIL) 1/2	100.0	1.00	-	-
DRIED 1/2	13.0	7.69	-	-
CANNED 1/2	31.2	3.21	16.0	6.25

1/ AVERAGE FOR ALL SPECIES

NOTE:--EFFECTIVE IN 1962, THE CONVERSION FACTORS LISTED ABOVE BECAME THE RESOURCE STATISTICS DIVISIONS' FACTORS FOR CONVERTING VARIOUS SHRIMP PRODUCTS TO HEADS-ON (ROUND) WEIGHT.



INSTRUCTIONS FOR THE COLLECTION OF
GULF SHRIMP DATA



COMPILED BY
GUY DAVENPORT
MARCH 1984

NATIONAL MARINE FISHERIES SERVICE
STATISTICAL SURVEYS DIVISION FIMD
SOUTHEAST FISHERIES CENTER
MIAMI, FLORIDA

APPENDIX K

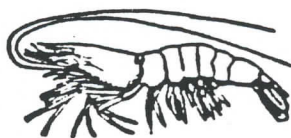
RECOVERY OF SHRIMP PRODUCTS AND FACTORS
FOR CONVERTING THEM TO HEADS-ON WEIGHT

ITEM	SOUTH ATLANTIC AND GULF CATCH	
	<u>PERCENT RECOVERY FROM HEADS-ON WEIGHT</u>	<u>TO CONVERT TO HEADS-ON WEIGHT MULTIPLY BY:</u>
HEADLESS:		
BROWN	62.1	1.61
PINK	62.5	1.60
WHITE	64.9	1.54
ROYAL RED	55.6	1.80
ROCK	59.9	1.67
SEA BOBS	65.4	1.53
ALL SPECIES(WEIGHTED AVERAGE)	62.9	1.59
PEELED FANTAIL, RAW <u>1/</u>	50.0	2.00
PEELED RAW <u>1/</u>	49.0	2.04
PEELED, COOKED <u>1/</u>	31.9	3.13
BREADED, RAW(INCLUDING FANTAIL) <u>1/</u>	100.0	1.00
DRIED <u>1/</u>	13.0	7.69
CANNED <u>1/</u>	31.2	3.21
TRACHYPENEAEUS SIMILUS	56.0	1.76

1/ AVERAGE FOR ALL SPECIES

NOTE --EFFECTIVE IN 1962, THE CONVERSION FACTORS LISTED ABOVE BECAME THE DATA MANAGEMENT AND STATISTICS DIVISIONS' FACTORS FOR CONVERTING VARIOUS SHRIMP PRODUCTS TO HEADS-ON (ROUND) WEIGHT.

INSTRUCTIONS FOR THE COLLECTION OF
GULF SHRIMP DATA



COMPILED BY KIM NEWLIN, ORMAN FARLEY,
ORVILLE ALLEN, ERNIE SNELL, AND GUY DAVENPORT
NOVEMBER 1982

STATISTICAL SURVEYS DIVISION, TMS
SOUTHEAST FISHERIES CENTER
75 VIRGINIA BEACH DRIVE
MIAMI, FLORIDA 33149

APPENDIX I

Conversion factors and count-size classifications for brown, pink, white, royal red and sea-bob shrimps.

Conversion factors: To convert heads-on to heads-off *weight*, *divide* by the factor. To convert heads-on to heads-off *price*, *multiply* by the factor. Reverse the procedure for going from heads-off to heads-on weights and prices.

Count-size classifications: The conversion factors are used to derive comparable count-sizes by multiplying the heads-on count size range end-points by the appropriate species conversion factor to obtain the corresponding heads-off count-size range end-points. As a handy reference, these operations yield:

Species	Conversion Factor	Brown & Pink		White*		Royal Red	
		Heads-on Count	Heads-off Count	Heads-on Count	Heads-off Count	Heads-on Count	Heads-off Count
Brown (<i>Penaeus aztecus</i>)	1.61	1-5	Under 10	1-6	Under 10	1-5	Under 10
Pink (<i>P. duorarum</i>)	1.60	6-9	10-15	7-9	10-15	6-8	10-15
White (<i>P. setiferus</i>)	1.54	10-12	16-20	10-13	16-20	9-11	16-20
Royal Red (<i>Hymenopenaeus robustus</i>)	1.80	13-16	21-25	14-16	21-25	12-14	21-25
Sea-bobs (<i>Xiphopenaeus kroyeri</i>)	1.53	17-19	26-30	17-19	26-30	15-17	26-30
Rock shrimp	1.67	20-22	31-35	20-23	31-35	18-19	31-35
		23-25	36-40	24-26	36-40	20-22	36-40
		26-31	41-50	27-32	41-50	23-28	41-50
		32-37	51-60	33-39	51-60	29-33	51-60
		38-43	61-70	40-45	61-70	34-39	61-70
		Over 43	Over 70	Over 70	Over 70	Over 39	Over 70

Example: 100 lbs. of 27-32 heads-on count white shrimp are landed at a price of \$0.56 per lb. This converts to $(100 \div 1.54) = 65$ lbs. of 41-50 count heads-off shrimp at a price of $(\$0.56 \times 1.54) = \0.86 per lb.

*While sea-bobs are not reported by count sizes, their conversion factor yields corresponding count sizes that are the same as for white shrimp.

Fishermen - All persons engaged in commercial catching and selling of fish, shellfish, or aquatic products.

Regular Fishermen - Fishermen who derive 50 percent or more of their gross income from fishing.

Casual Fishermen - Fishermen who derive less than 50 percent of their gross income from fishing.

Crew - Total number aboard a boat or vessel, except in case of party or sport boats - which refer to page 10 for definition.

Gear - For purposes of this survey, gear will be defined as the apparatus actually employed in catching the fish. Examples - purse seines, otter trawl, gill net, dredge, etc.

Catch - The quantity of fish, shellfish, or other aquatic products taken with fishing gear and sold synonymous with landings for this report.

Heads-on, Heads-off calculations:

- A. To convert 100 pounds of 15/20 heads-off white shrimp to heads-on count and weight:

Multiply by 3 and divide by 5 for size.

$$15 \times 3 = 45 - 5 = 9$$

$$\overline{20} \times 3 = 60 - 5 \overline{12} \quad \text{count - heads-on}$$

$$100 \times 1.54 = 154 \text{ pounds}$$

- B. To convert 100 pounds of 9/12 count heads-on shrimp to heads-off count and weight:

Multiply by 5 and divide by 3 for size.

$$9 \times 5 = 45 - 3 = 15$$

$$\overline{12} \times 5 = 60 - 3 = \overline{20} \quad \text{count - heads-off}$$

- (1) For brown shrimp the factor 1.61 is used instead of 1.54
- (2) For pink shrimp the factor 1.60 is used.
- (3) For seabobs the factor 1.53 is used.



UNITED STATES DEPARTMENT OF COMMERCE
National Oceanic and Atmospheric Administration
NATIONAL MARINE FISHERIES SERVICE
Room 1000
600 S. Maestri Place
New Orleans, LA 70130

June 4, 1984

TO: All F/SEC13x24 Personnel
All Alabama, Mississippi, and Louisiana Port Agents

FROM: F/SEC13x24 - Thomas R. Dawley *Thomas R. Dawley*
Supervisory Fishery Reporting Specialist

SUBJECT: Conversion of Count Size Classifications

Attached is a copy of "Conversion Factors and Count Size Classifications for Shrimp" that has been updated to include the conversion to heads-off counts for small heads-on sizes that are frequently reported by dealers in this area.

Note carefully, however, that the procedure to be followed is clear and comprehensive. It should be followed precisely in converting whatever count size category of shrimp you may encounter in a dealer's records to the proper form for reporting on NOAA Form 88-20, "Shrimp Data Collection Form." Above all remember that we are no longer using only pre-established size categories, and so any conceivable size category reported would have a specific range following conversion.

If you have any questions at all pertaining to these procedures, please direct them to Lee Usie or myself.

7/6

Tom

Attachment

— see my comment on the attached!

cc: ✓ F/SEC13x2 - Newlin
F/SEC13x21 - Snell
F/SEC13x23 - Farley
F/SEC13x23 - Bailey
AL DCNR DMR - Walter M. Tatum
AL DCNR DMR - Henry G. Lazauski
MS DWC BMR - Frederick Deegen
LDWF - Claude J. Boudreaux
LSU CWR CEFI - Gilbert W. Bane
LSU CWR CEFI - Sandra Russell





UNITED STATES DEPARTMENT OF COMMERCE
National Oceanic and Atmospheric Administration
 NATIONAL MARINE FISHERIES SERVICE

Room 1000
 600 S. Maestri Place
 New Orleans, LA 70130

June 4, 1984

TO: Files

FROM: F/SEC13x24 - Thomas R. Dawley *Tom*
 Supervisory Fishery Reporting Specialist

SUBJECT: Conversion Factors and Count Size Classifications for Shrimp

*Tom Do not
 round - Can
 out to 3 digi
 for comp*

I. Conversion factors by species

<u>Species</u>		<u>Conversion Factor</u>	
<u>Common Name</u>	<u>Scientific Name</u>	<u>Heads-on to heads-off</u>	<u>Heads-off to heads-on</u>
Brown Shrimp	Penaeus aztecus	1.61	0.621
Pink Shrimp	Penaeus duorarum	1.60	0.63625
White Shrimp	Penaeus setiferus	1.54	0.65649
Royal Red Shrimp	Hymenopenaeus robustus	1.80	0.56556
Rock Shrimp	Sicyonia species	1.67	0.60599
Sea Bobs	Xiphopenaeus kroyeri	1.53	0.654
Rarebacks	Trachypenaeus similis	1.76	0.560

To convert from either heads-off or heads-on, multiply by the indicated conversion factor.

Example: 100 lbs. of 27-32 heads-on count white shrimp are landed at a price of \$0.56 per lb. This converts to $(100 \times 0.65) = 65$ lbs. of 41-50 count heads-off shrimp at a price of $(\$0.56 \times 1.54) = \0.86 per lb.

II. Count size classifications

Multiply the end points of the heads-on count size range used by the dealer by the appropriate conversion factor so as to obtain the corresponding heads-off count size range end points for reporting landings on NOAA Form 88-20, "Shrimp Landings Data."

As a convenient reference, many of the size categories most frequent used by the shrimp industry in this area have been converted in the table presented on the following page.

Example: 112 to 137 count brown shrimp, heads-on, would be the equivalent of 180 to 221 count brown shrimp, heads-off as follows:

$$112 \times 1.61 = 180$$

$$137 \times 1.61 = 221$$



Brown & Pink		White*		Royal Red	
<u>Heads-on Count</u>	<u>Heads-off Count</u>	<u>Heads-on Count</u>	<u>Heads-off Count</u>	<u>Heads-on Count</u>	<u>Heads-off Count</u>
1-5	1-10	1-6	1-10	1-5	1-10
6-9	10-15	7-9	10-15	6-8	10-15
10-12	16-20	10-13	16-20	9-11	16-20
13-16	21-25	14-16	21-25	12-14	21-25
17-19	26-30	17-19	26-30	15-17	26-30
20-22	31-35	20-23	31-35	18-19	31-35
23-25	36-40	24-26	36-40	20-22	36-40
26-31	41-50	27-32	41-50	23-28	41-50
32-37	51-60	33-39	51-60	29-33	51-60
38-43	61-70	40-45	61-70	34-39	61-70
44-50	71-80	46-50	71-77	39-over	70-999
51-60	81-97	51-60	78-92		
61-70	98-114	61-70	93-108		
71-80	115-129	71-80	109-123		
81-100	130-161	81-100	124-154		
101-120	162-193	101-120	155-185		
121-over	194-999	121-over	186-999		

*Although sea-bobs are not reported in heads-off weights, their conversion factor and corresponding count sizes would be the same as for white shrimp.

*not exactly Tom but
approximately*

6/2/84

Heads-on, Heads-off calculations:

A. To convert 100 pounds of 15/20 heads-off white shrimp to heads-on count and weight:

Multiply by 3 and divide by 5 for size.

$15 \times 3 = 45 \div 5 = 9$

$20 \times 3 = 60 \div 5 = 12$ count - heads-on

$100 \times 1.54 = 154$ pounds

B. To convert 100 pounds of 9/12 count heads-on shrimp to heads-off count and weight:

Multiply by 5 and divide by 3 for size.

$9 \times 5 = 45 \div 3 = 15$

$12 \times 5 = 60 \div 3 = 20$ count - heads-off

$100 \times 1.54 = 65$ pounds

- (1) For brown shrimp the factor 1.61 is used instead of 1.54
- (2) For pink shrimp the factor 1.60 is used.
- (3) For seabobs the factor 1.53 is used.

TRANSNANTAL SHIP		66-84
Name <i>Newton</i>		SHIP NO. OR BOOK NO. <i>FSEC 13x2</i>
Name <i>Dawley</i>		SHIP NO. OR BOOK NO. <i>FSEC 13x24</i>
ACTION		
<input type="checkbox"/> NOTE AND FILE	<input type="checkbox"/> FOR OUR CONVERSATION	
<input type="checkbox"/> NOTE AND RETURN TO ME	<input type="checkbox"/> FOR YOUR RECORD	
<input type="checkbox"/> RETURN WITH SOME BEINGS	<input type="checkbox"/> FOR YOUR APPROVAL	
<input type="checkbox"/> NOTE AND SEE ME ABOUT THIS	<input checked="" type="checkbox"/> FOR YOUR INFORMATION	
<input type="checkbox"/> PLEASE ANSWER	<input type="checkbox"/> FOR YOUR COMMENTS	
<input type="checkbox"/> PREPARE REPLY FOR MY SIGNATURE	<input type="checkbox"/> NONE	
<input type="checkbox"/> TAKE APPROPRIATE ACTION	<input type="checkbox"/> INVESTIGATE AND REPORT	
COMMENTS: <i>I received this in today's mail from Belveston. Please note my June 4, 1984 conversion of Count Size Classifications. Please note that you have received. I do not believe we are this consistent with established procedure. Why not they are?</i>		

entry